

# LUMBAR FUSION



WeCAN  
PEDICLE SCREW SYSTEM



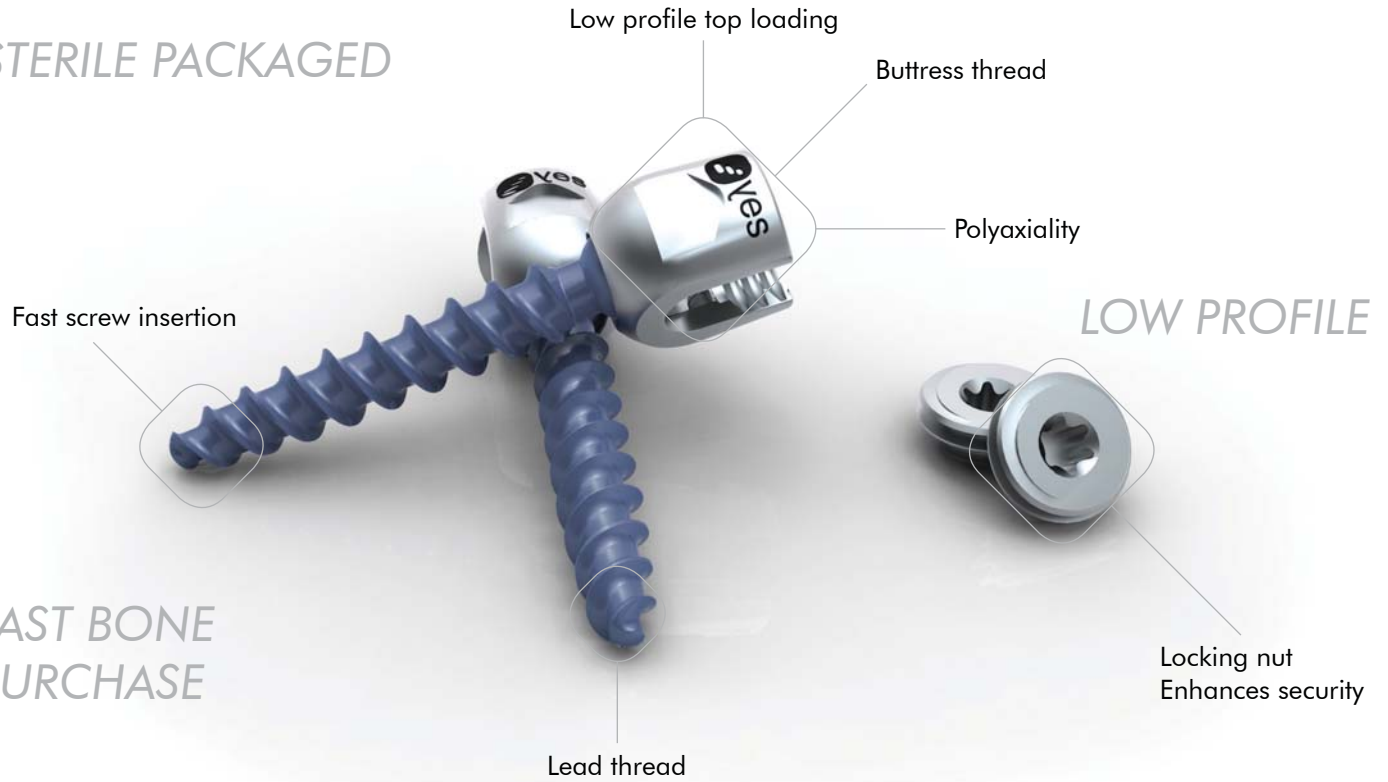
yellowsteps™



STERILE PACKAGED

FAST BONE PURCHASE

FAST SCREW INSERTION



LOW PROFILE

NO CROSS THREADING

INDICATIONS

- Degenerative disc disease
- Spinal stenosis
- Lumbar scoliosis
- Spondylolisthesis
- Trauma (fracture or dislocation)



# INSTRUMENTS



Pedicule awl  
REF : WCAW10



Tapper screw driver  
REF : WCATSD40



Rod rocker  
REF : WCAWR20



Probe curved  
REF : WCAPC30



Sounding probe  
REF : WCASP40



Guide pin, right and left  
REF : WCAGPR50



Torque screwdriver  
REF : WCATSD50



Rod holder  
REF : WCARH70



Probe straight  
REF : WCAPS20



Counter torque  
REF : WCACT30

Rod pusher, straight  
REF : WCARPS80



Free handle  
REF : WCAFH60



Rod pusher, curved  
REF : WCARPC90

Hexagonal eye key  
REF : WCAHK10



French bender  
REF : WCAFB50



# IMPLANTS

Polyaxial screw - WCIPS55-25



Spondylolisthesis screw - WCISS55-30



Monobloc screw - WCIMS55-25



Locking nut - WCILN



Curved rod Ø 5.5- WCICR55-35



Connecting rod - WCICLX-01



Straight rod Ø 5.5 - WCICR55-130





# LUMBAR FUSION

WeSHARE  
LUMBAR CAGE



yellowsteps™



# Optimal Design for Great Fusion Results

- **Bulleted nose for comfort of insertion**  
Two angulations 4° and 8°

- **Optimized Large graft windows**  
Success for fusion

- **Sterile packaged**  
Full traceability and safety

- **Peek and radiolucent**  
X-ray markers to visualize the cage

- **Small size to accommodate low heights**  
from 7 to 14 mm

- **Self retaining teeth**  
Adjusted teeth to ensure primary stability

- **Simple, ergonomic and intelligent instrumentation**  
Bi-convex shape



# INSTRUMENTS

Vertebral distractor  
REF : WSAVD10



Bone Impactor  
REF : WSABI10



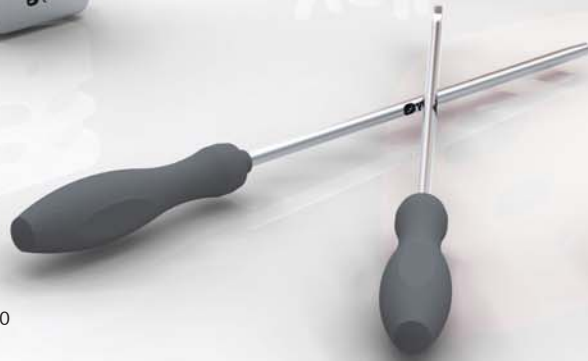
Cage Holder  
REF : WSACH10



Bone Filler  
REF : WSABF10



Trial Holder  
REF : WSATH10



Cage Impactor  
REF : WSACI10



yellowsteps™



Straight Curette  
REF : WSACUS



Right Curette  
REF : WSACUR

Handle  
REF : WSAH10



Reamer  
REF : WSAR-06



Distractor  
REF : WSAD-06

Left Curette  
REF : WSACUL



Rack  
REF : WSACTS10



# IMPLANTS

## Lumbar PLIF Cage



Height	7, 8, 9, 10, 11, 12
Width	10 mm
Length	22 and 25 mm







# CERVICAL FUSION



WeTOP  
CERVICAL CAGE



yellowsteps™



# An excellent anatomical fit

Curved and wedge-shaped cervical cages



- **Small sizes and large sizes**

From 4,5 mm to 10 mm.



- **Sterile packaged**

Safety and full traceability of implant with complete identification stickers.

- **Peek**

High ultimate strength.



- **Radiolucent**

X-ray markers to visualize the cage.

- **Stability**

Anti back-out teeth for a no-stress shielding effect.  
Ideal load sharing implant.



- **A large graft window**

To optimize bone fusion.



yellowsteps™

# INSTRUMENTS

Bone filler  
REF : WTABF60



Rack  
REF : WTACTS10



Caspard  
REF : WTACASP70



Curette  
REF : WTACU10



Implant holder  
REF : WTAIH40



Impactor  
REF : WTATH10



Open curette  
REF : WTAOC20

Graft pusher  
REF : WTAGP80

Final impactor  
REF : WTAFIM50



# IMPLANTS

## Straight cervical cages

## Anatomical cervical cages



Height	4.5, 5, 6, 7, 8, 9, 10
Width	14 and 16 mm
Length	12 and 14 mm



CERVICAL  
FUSION



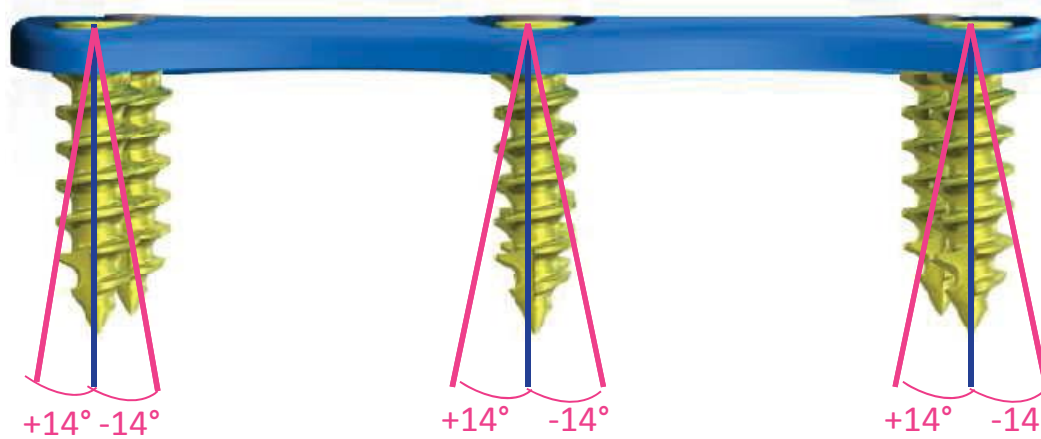
**WeCOVER**  
Anterior Cervical Plate



# SIMPLICITY, PERFORMANCE, SECURITY AND INTELLIGENT INSTRUMENTATION

5 levels available  
Sizes from 22 mm to 110 mm

Low profile : 1,9 mm  
Width : 18 mm



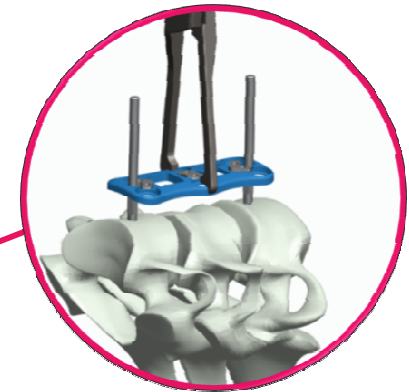
Pre-bended plates

+/- 14° angulation  
ceph/caudal



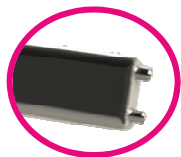
Temporary fixation holes with  
CASPARD Pins

One locking device for two  
variable screws



Large visualization  
windows

# INSTRUMENTS



# IMPLANTS



Length 22, 24, 26, 28, 30, 32, 34 mm



Length 36, 38, 40, 42, 44, 46, 48, 50 mm



Length 52, 55, 58, 61, 64, 67 mm



Length 70, 74, 78, 82, 86 mm



Length 90, 95, 100, 105, 110 mm



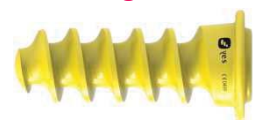
Self-drilling - Fixed



Self-drilling - Variable

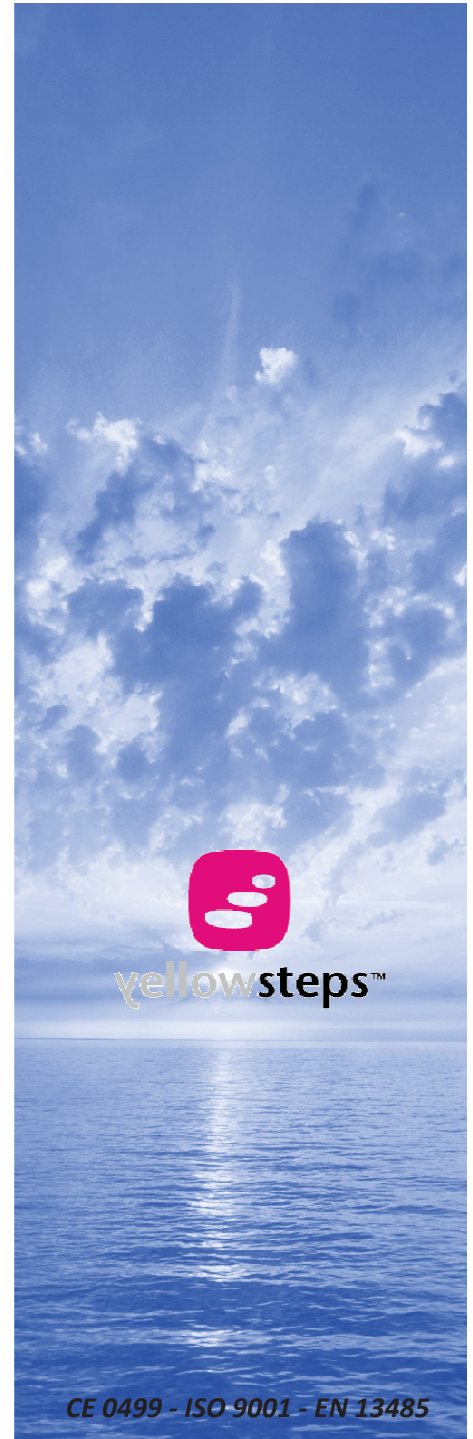


Self-tapping - Fixed



Self-tapping - Variable

Screws  $\varnothing$ 4 and 4,5  
Length 12, 14, 16, 18, 20, 22



CE 0499 - ISO 9001 - EN 13485